



# CUTTERMasters

Tool and Cutter Grinders

## Full Range Drill Point Grinder DS-232

2mm to 32mm (.08" to 1-1/4")

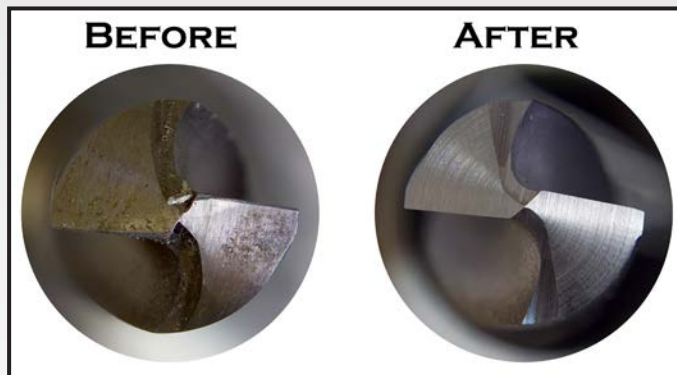


### DS-1332

- Sharpens drills 2mm to 32mm (.08" to 1-1/4") diameter
- Creates 60° to 140° point angle
- Creates variable split point geometries
- Adjustable depth-of-cut for split point geometry
- Includes 32pc collet set
- Machine size: 45cm x 27cm x 19cm x 25kg

### Specifications

Drill Diameter	.08" - 1-1/4" (2-32mm)
Point Angle	60 - 140°
Power Supply	AC110V 50/60Hz, (220V Opt.)
RPM of Motor	5500rpm
Grinding Wheel	DS13-200, DS-C100
Weight	64lbs (29kg)
Machine Size	20"x11"x12" (50x 29x 31 cm)
Type of Thinning	X Thinning
Standard Accessories	Er20 and ER40 chuck and 31pc collet set
Optional Diamond Wheel	DS13-200D for carbide



Engineering and Prototyping - 2353 Ridgcrest Place, Ottawa ON K1H 7V4  
 Manufacturing and Distribution - 810 Proctor Ave, Ogdensburg NY 13669  
 Call us 1 (800) 417-2171

[www.cuttermasters.com](http://www.cuttermasters.com) or email: [sales@cuttermasters.com](mailto:sales@cuttermasters.com)