



# CUTTERMasters

Tool and Cutter Grinders

## Full Range Drill Point Grinder DS-232

13mm to 32mm (1/2" to 1-1/4")

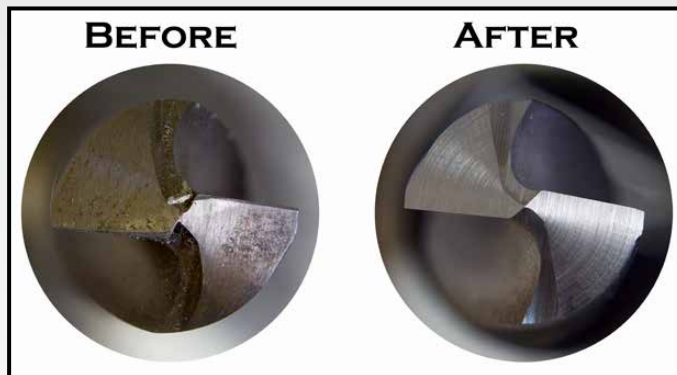


### DS-1332

- Sharpens drills 2mm to 32mm (1/8" to 1 1/4") diameter
- Creates 90° to 140° point angle
- Creates variable split point geometries
- Adjustable depth-of-cut for split point geometry
- Includes 32pc collet set
- Machine size: 45cm x 27cm x 19cm x 25kg

### Specifications

Cutting Tool Capacity	3/16 to 3/4" (5-20mm)
# Flutes	2, 3, 4 and 6-flute
Cutting Angle Concavity	0° to 3°
Flute Length	n/a
Lip clearance	6°
Grinding Wheel 2 pc. ESD200	ESD200 for ends (CBN avail.)
Collets included	ER-20, 25
Center Cutting Depth	Adjustable
Voltage	110V (220V available)
Construction	Steel, steel cabinet
Machine dimensions	14x 7x 9" (36 x 18 x 23cm)
Machine weight	33lbs (15kg)



Engineering and Prototyping - 2353 Ridgcrest Place, Ottawa ON K1H 7V4  
 Manufacturing and Distribution - 810 Proctor Ave, Ogdensburg NY 13669  
 Call us 1 (800) 417-2171

[www.cuttermasters.com](http://www.cuttermasters.com) or email: [sales@cuttermasters.com](mailto:sales@cuttermasters.com)