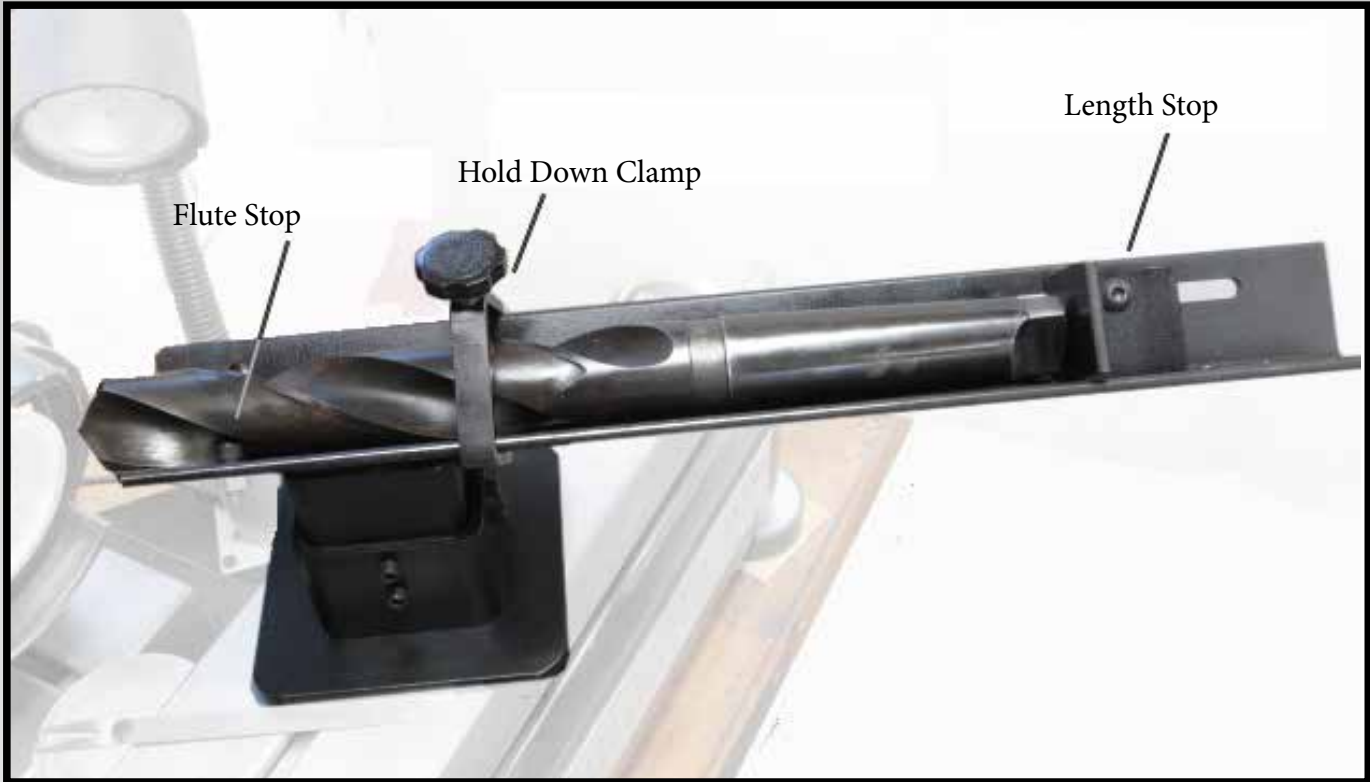


# Large Drill Grinding Attachment

## CM-06B

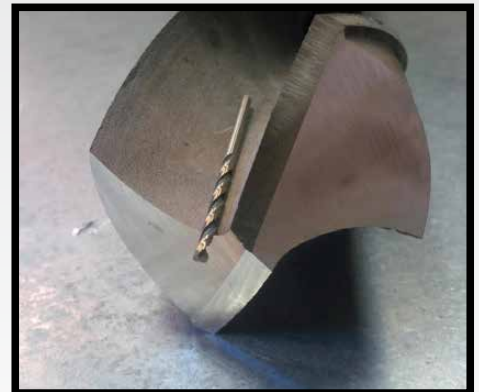


- This fixture is designed to bolt onto all CUTTERMASTER type machines or other tool grinders.
- For sharpening all large drills and core drills
- Angle adjustment from 180 to 100 degrees

Instructions : Bolt the CM-06B to the x-axis table with T-nuts provided. Load the drill as shown in the picture. Set the flutes so that the cutting lips are horizontal. Fix the drill rotation with the flute stop and length with

length stop. Set the tip angle by rotating the fixture, then lock in place with the hold down clamp.

Set the motor angle to the desired angle (using a face wheel or tapered cup wheel, 6°-9° for primary 10°-15° for secondary). Primary lip width should be 1/8" to 3/16" width like the picture



Engineering and Prototyping - 2353 Ridgecrest Place, Ottawa ON K1H 7V4  
Manufacturing and Distribution - 810 Proctor Ave, Ogdensburg NY 13669  
Call us 1 (800) 417-2171

[www.cuttermasters.com](http://www.cuttermasters.com) or email: [sales@cuttermasters.com](mailto:sales@cuttermasters.com)

